



FarmTRXTM

The FarmTRX Yield Monitor and Moisture Sensor installs on any make, age or model of combine and automates the creation of precision yield maps.

HOW IT WORKS

Install—The yield and moisture system can be installed on any combine. QuickConnect mounting technology ensures a fast and easy installation of the Yield Monitor sensors on the clean grain elevator. The Moisture Sensor, installed on the clean-out hatch door, measures the capacitance of flowing grain and records live and average grain moisture.

Harvest—Yield data collection on the combine is fully automated – it is always recording while harvesting.

Sync—Upload data wirelessly from the FarmTRX Mobile App. Data can be uploaded from the field over mobile data or at home over Wi-Fi.

Review—Review yield data online with multiple map types and reports. The Web App automatically sorts, cleans and corrects yield data and processes it into agronomy-ready yield maps within the hour. If you don't want maps, access to your raw yield data is free and unlimited.

CONTACT

www.farmtrx.com

1-800-991-5136

info@farmtrx.com

COMPONENTS

- 1. Yield Monitor
- 2. Moisture Sensor
- 3. Drill Guide, Bits and Extension
- 4. 8 ft. (2.4 m) Sensor Interconnect Wiring Harness
- 5. 20 ft. (9 m) Primary Wiring Harness

- 6. Optical Sensors and QuickConnect Mounting System
- 7. External GPS Antenna

Parts Bag

- Electrical T-Splice Connectors
- Zip Ties

1.



4.



5.



2.



3.

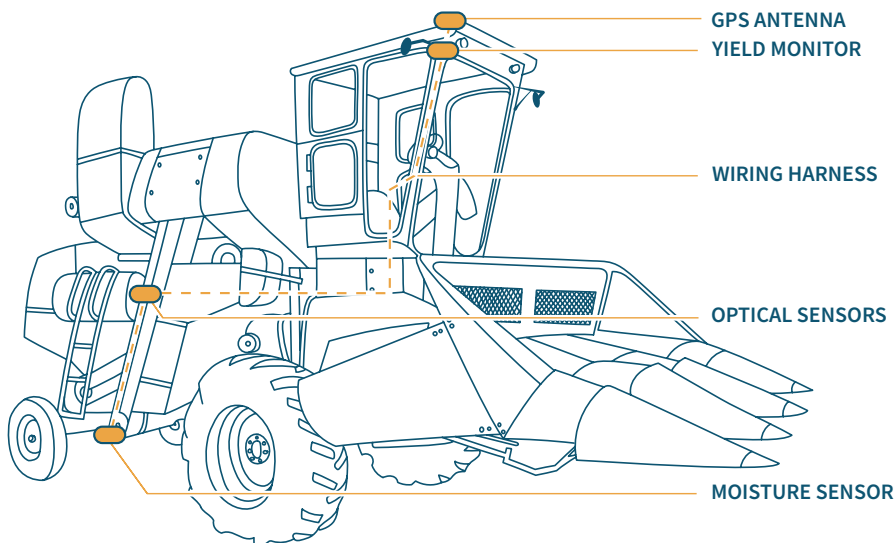


6.



7.





GPS Antenna—The external multi-constellation antenna is connected to the Yield Monitor via an SMA connector and mounts on the roof of the cab on the centerline of the combine.

Yield Monitor—The “brains” of the operation. Containing internal GPS antenna and Bluetooth® connectivity, the Yield Monitor mounts in the cab of the combine and needs to be wired into switched 12V power.

Wiring Harness—CAN capable wiring connects the Yield Monitor in the cab to the optical sensors and Moisture Sensor installed on the clean grain elevator.

Optical Sensors—QuickConnect mounting technology allows for fast and efficient installation. Two sensors are mounted on either side of the elevator and use a light beam to measure the volume of grain on each paddle.

Moisture Sensor—The Moisture Sensor installs on the clean-out hatch door and records live and average grain moisture.



YIELD MONITOR INSTALLATION

Find the complete Yield Monitor Installation Manual here:

www.farmtrx.com/documentation/

TOOLS REQUIRED

- Power Drill
- Pliers, Vice Grips or Side Cutters
- Center Punch
- Measuring Tape
- Marker, Pen, or Pencil
- Flat Head Screwdriver
- Masking Tape
- Round Bastard File (optional)

YIELD MONITOR UPGRADES

The Yield Monitor features a CAN compatible Primary Wiring Harness for easier yield data sharing.

With the FieldView™ Drive Adapter Cable you can connect to and power the Drive in any combine.





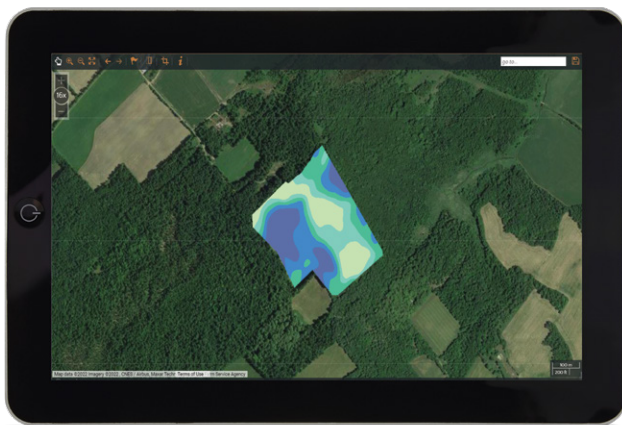
MOISTURE SENSOR INSTALLATION

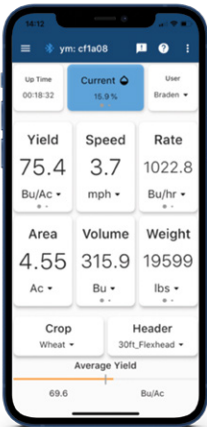
Find the complete Moisture Sensor Installation Manual here:

www.farmtrx.com/documentation/

TOOLS REQUIRED

- Paper Cutter Template
- Center Punch
- 2-9/16" (65 mm) Hole-Saw
- Angle Grinder Cut-Off Wheel Blade
- 3/32" Allen Key
- 1/4" Socket
- 11/32" Socket





SETTING UP YIELD & MOISTURE

To watch an installation on a John Deere S770 visit www.youtube.com/c/FarmTRX

1. Install the Latest Version of the Harvest

Mobile App: Available on the Apple App Store and Google Play Store. Verify that your smartphone or tablet is up to date and compatible. The mobile app requires iOS 9.0 or later or Android 5.0 and up.

2. Connect Your Device to the Yield Monitor: Connect via Bluetooth® in the mobile app. The LED on the monitor will flash blue during connection and green once connection is successful. For detailed instruction on app setup refer to the Guide on the FarmTRX website.

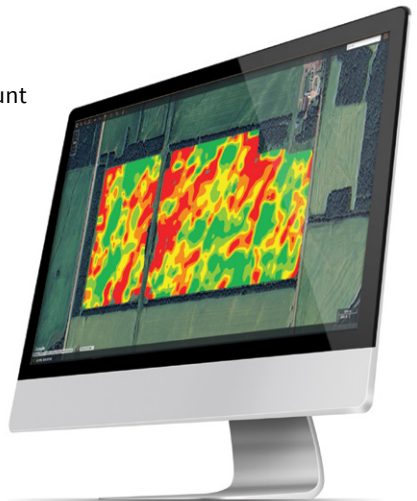
3. Add Headers, Crops and Calibrate Sensors:

Calibrate sensors once per season or after performing elevator maintenance.

4. Harvest: Begin harvesting. Yield data is recorded by the Yield Monitor and yield readings display on the Mobile App. To get accurate live yield readings in the cab, calibrate your crop or variety. If you aren't able to calibrate in field, yield data will still be recorded and can be calibrated post-harvest by inputting a final known yield in the Web App.

5. Upload Yield Data and View Precision Maps:

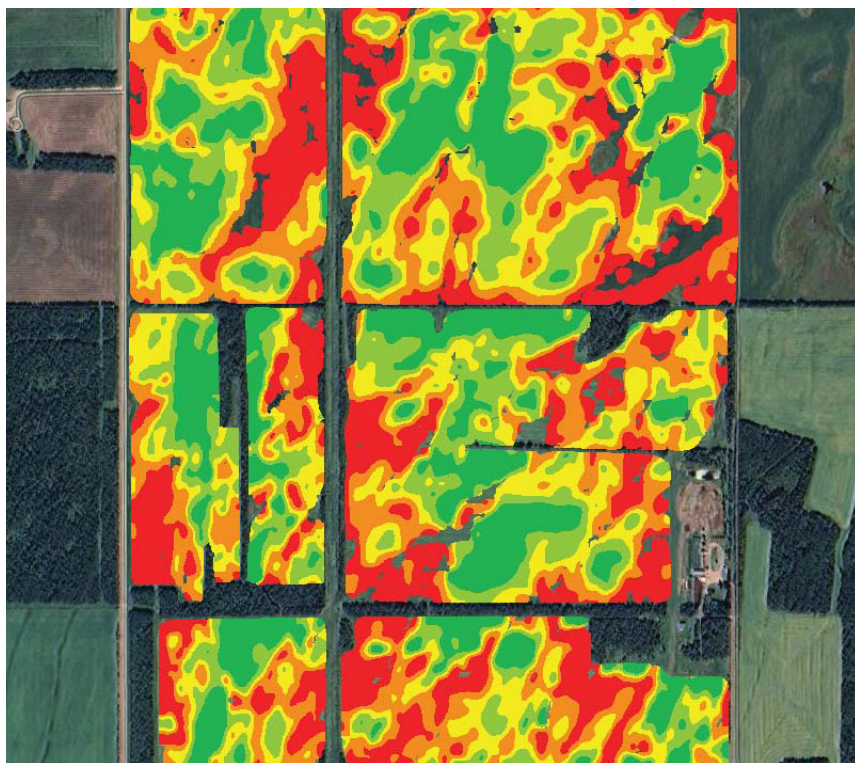
If you have yet to register for a FarmTRX account visit www.farmtrx.com/register/. Precision yield maps are processed in the Web App within minutes of data upload.





ACCESS YIELD DATA AND MAPS

All Yield Monitor operators have free, unlimited access to their recorded yield data. Yield data can be exported from the Web App as ESRI.shp or AgLeader Basic file formats. Users pay a yearly, per-acre fee for the automatic cleaning and normalization of yield points into precision maps in the FarmTRX Web App.



FarmTRXTM

www.farmtrx.com